

透視雜誌

perspective

ARCHITECTURE
INTERIORS
DESIGN

FEBRUARY 2014

www.perspectiveglobal.com



COUNTRY REPORT:

JAPAN

專題透視日本

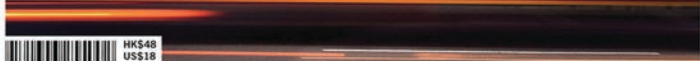
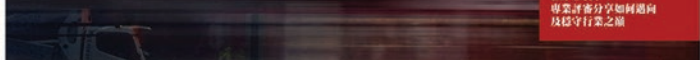
40
UNDER
40
2014

**READY,
STEADY, FLY!**

Get on board and
nominate a star for
our 2014 awards
「2014年透視四十驕子」，一
從速提名你心目中的明日之星

**PERSPECTIVE
AWARDS 2013:
JUDGES'
SEMINAR**

The experts share
their thoughts on the
tricky subject of being
(and sustaining)
the best
專業評審分享如何邁向
及穩守行業之巔



HK\$48
US\$18
€15

STILL FROM A FILM: Everything about her was of the same exasperating impenetrable order... the strenght of her shapely legs, the dirty sole of her white sock, the t... water she wore despite the closeness of the room, her wenchy sm... and especially the dead end of her face with its strange flush and fresh... ade-up lips.

With style & substance

Text: Teresa Chow Photography: Courtesy of CJC Design

In Lisbon, an 18th century Pombaline building houses a contemporary residence, meticulously designed and styled by Cristina Jorge de Carvalho

Deined by a feminine touch and an eclectic aesthetic, a 1,250 sq-ft apartment located in Lisbon, Portugal was conceptualised by the award-winning Cristina Jorge de Carvalho of CJC Design in a bespoke layout to complement the homeowners' cosmopolitan lifestyle.

For one thing, the Pombaline structure in which the apartment is housed formed the starting point for de Carvalho's inspiration. Dating back to the 18th century, Pombaline buildings introduced early anti-seismic design features and early prefabricated building methods to the architectural world. To resist earthquakes, a flexible wooden structure was implanted into the walls, floors and roofs, and later covered by pre-

manufactured building materials.

Similar to the *tong lau* typology commonly seen in southeast Asia, Pombaline buildings are typical four-storey structures with arcades on the ground floor to allow shops, with balconies on the first floor, and attics. Although all buildings of this type follow this general typology, small decorative details on the façade speak of the function and significance of the building itself.

Born in Mozambique, Africa, and now living in Lisbon, de Carvalho travels around the world for inspiration, and founded CJC in 2000. On this particular project, she decided to expose the internal wooden structures as zone dividers to break down barriers between the living and dining areas. In the living room, vintages pieces enhance

the elegant character of the space — in addition to defining the spatial design, de Carvalho also personally selected all the artwork and design items for the apartment, which cohabit harmoniously with items such as a Moroccan Berber rug and tribal bench in dark wood.

In the dining room, vintage DSW Charles Eames chairs and a vintage suspended Doria lamp from the 1950s act as timeless centrepieces alongside CJC's bespoke OH dining table. Adding extra colour and scale to the soft earth tone-dominated space is artwork by Joao Louro.

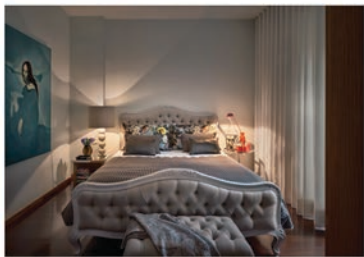
A definitive feminine touch is apparent in the bedroom, where a replica of a Louis XV bed and bench, both lacquered and upholstered in linen capitoné, are the central elements of the space. The walls shimmer with tranquil sea foam green, carrying through the soft colour palette of the entire apartment. Mismatched bed stands add a playful dissymmetry which contrast and highlight the classicism of the other pieces. On one side is a wooden piece designed by CJC; on the other, a classic glass table designed by Eileen Gray.

The made-to-measure black lacquered kitchen oozes clean lines and functionality, with personal touches — such as an antique crystal lamp and an early 20th century silver tea set from Japan — add warmth and personality.

Allowing herself to be guided by the personal tastes and needs of the homeowners, de Carvalho has created a home that also speaks volumes about her astuteness in defining space not only by form and function, but individual touch as well.

Clockwise from top right The eclectic living room is defined by a feminine aesthetic • Both the bedspread and chess cushions are in Ralph Lauren fabric • The wooden space divider adds symmetry • The armchairs feature printed fabric by Manuel Canovas from the 1950s

Facing page The black Tiffany by Boca do Lobo sidetable adds a dapper touch to the living room





撰文：Teresa Chow 攝影：由CJC Design提供

在里斯本一幢18世紀的麗巴林式建築內，Cristina Jorge de Carvalho巧妙地將一住宅單位添上現代的佈景



Closetwise from top left Many of the decorative items were selected by the designer herself • A long rug adds warmth to the walk-in-closet • Earth tones abound in the bathroom